

## *Instructions for use 941256*

### **Cutting & drilling jig for fitting VT to an Elite Blade**

These instructions are for use by a suitably qualified practitioner or technician.

Use appropriate Health and Safety equipment at all times including extraction facilities.

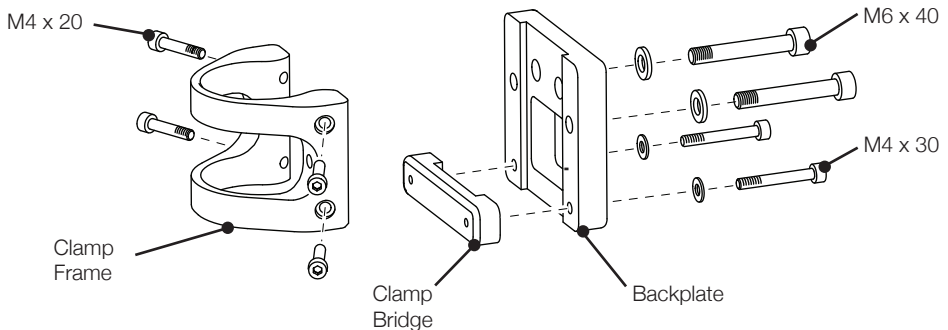
#### **For an existing Elite Blade user:**

If fitting the VT to an existing Elite Blade that has been fitted with the Shifting Male Pyramid option the build height is the same. Swap the top housing for the VT using the same holes. Ensure that the screws are torque tightened correctly to 25Nm and that Loctite 243 is used on the threads.

#### **Contents of VT Cutting and Drill Jig kit:**

- Cutting and Drill Jig Clamp Frame, screws and washers
- Socket Screw Key 3.0
- Socket Screw Key 5.0
- Twist Drill 8.1mm Diameter

#### **Cutting and Drill Jig components:**



## Procedure for using the Cutting & drilling jig to fit VT to an Elite Blade

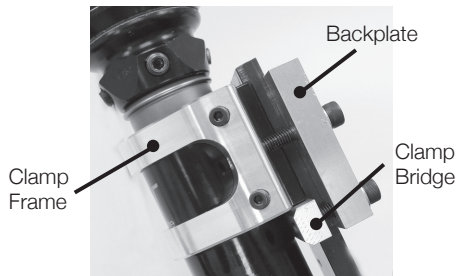
- 1** Measure and cut the Elite Blade to approximate length allowing 10-15mm longer for final fitting.

Remove the 4x blanking screws in the VT and retain.

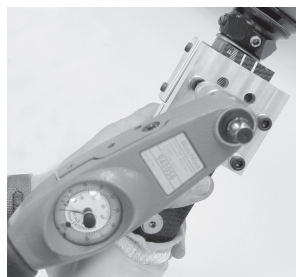
Attach the Cutting Jig Clamp Frame to the VT using 4x M4 x 20 screws.



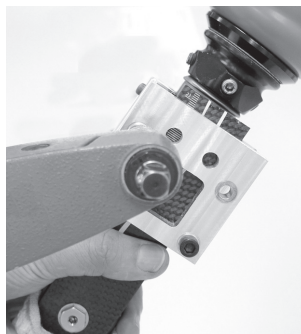
- 2** Loose fit the Backplate to the Clamp Frame using the 2x M6x 40 bolts and washers. Loose fit the Clamp Bridge to the Backplate using 2x M4 x 30 screws and washers.



- 3** Fit the VT & Cutting Jig onto the Elite Blade and torque tighten the 4 Clamp screws to 10Nm

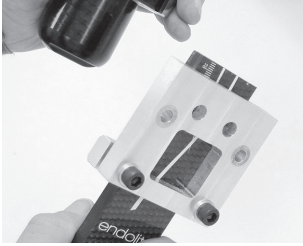


- 4** Adjust the height position of the VT to suit the user, ensure the Clamp screws are torque tightened to 10Nm after adjustment. Confirm length with a short walking trial within the fitting room only.

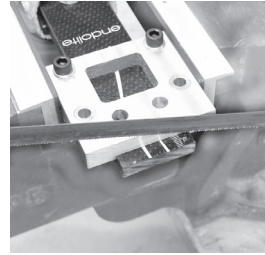


**5**

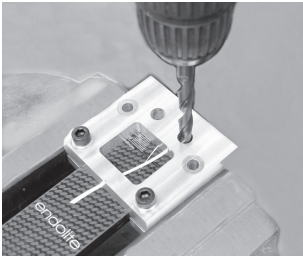
Release the VT/Clamp Frame from the Elite Blade by undoing the 2x M6 Frame Clamp screws (**NOT** the 2x Clamp Bridge screws).

**6**

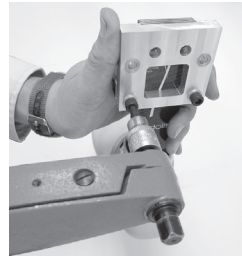
Saw the Blade to the set length using the Backplate as a guide.

**7**

Drill 2x 8.1mm Holes in the Elite Blade for the fixing bolts with the drill bit provided using the top most holes in the Backplate as a guide. Deburr end of Blade.

**8**

Undo the screws and remove the Backplate and Clamp Bridge from the Elite Blade. Deburr the end of the Blade with a file.

**9**

Remove the Cutting Jig from the VT. Refit the small blanking screws to the VT.

**9**

Attach the VT to the Elite Blade with the screws provided with the VT and using Loctite 243 torque tighten the screws to 25Nm.



4  
25Nm

Distributor/Distributeur/Händler/Distributore/Distribuidor

### Head Office

Chas A Blatchford & Sons Ltd  
Lister Road  
Basingstoke  
Hampshire  
RG22 4AH  
United Kingdom  
Tel: +44 (0) 1256 316600  
Fax: +44 (0) 1256 316617  
Email: [sales@blatchford.co.uk](mailto:sales@blatchford.co.uk)  
[www.endolite.co.uk](http://www.endolite.co.uk)

### Customer Services UK

Prosthetic and Orthotic Products  
11 Atlas Way  
Atlas North  
Sheffield  
S4 7QQ  
United Kingdom  
Tel: +44 (0) 114 263 7900  
Fax: +44 (0) 114 263 7901  
Email: [sales@blatchford.co.uk](mailto:sales@blatchford.co.uk)  
[www.endolite.co.uk](http://www.endolite.co.uk)

### endolite North America

1031 Byers Road  
Miamisburg  
Ohio 45342  
USA  
Tel: 800.548.3534  
Fax: 800.929.3636  
Email: [info@endolite.com](mailto:info@endolite.com)  
[www.endolite.com](http://www.endolite.com)

### endolite Germany

Endolite Deutschland GmbH  
Holzstr. 5  
95336 Mainleus  
GERMANY  
Tel: +49 9229 9737 000  
Fax: +49 9229 9737 006  
Email: [info@endolite.de](mailto:info@endolite.de)  
[www.endolite.de](http://www.endolite.de)

### endolite France

Parc d'Activités de l'Aéroport, 125 Impasse  
Jean-Baptiste Say  
34470 PEROLS  
France  
Tel: 33 467 820820  
Fax: 33 467 073630  
Email: [endolitefrance@free.fr](mailto:endolitefrance@free.fr)  
[www.endolite.fr](http://www.endolite.fr)

### endolite India Ltd

A4 Naraina Industrial  
Area  
Phase 1  
New Delhi – 110028  
INDIA  
Tel: 91 11 45689955  
Fax: 91 11 25891543  
Email: [endolite@vsnl.com](mailto:endolite@vsnl.com)

